



Jumping Wairarapa Group

Covid-19 Level D2 - Response Plan

This plan was created by the Jumping Wairarapa Area Committee in September 2021 for the purpose of clarifying the management and running of Jumping shows under Alert Level Delta 2.

The plan is supported by a Solway Showgrounds zone map, and has been created with assistance from ESNZ.

Any questions should be directed to the committee via the Wairarapa Jumping Group facebook page, or by contacting the Area Chair on 027 277 4748.

Site Operations

At alert Level 2, we are able to run jumping at our outdoor Solway Showgrounds venue so long as all groups are managed to Covid-19 Level 2 guidelines, and social distancing and hygiene requirements are adhered to. While we can exceed 100 people in outdoor gatherings as at 17 October, we are advised this could change during the week, so we need to plan for not exceeding gatherings of up to 100 people outside. This includes:

- ★ You must be physically well to attend our event. If you are unwell, are awaiting test results, or displaying any Covid-19 symptoms you must stay home and must not attend the show.
- ★ Every person entering the grounds **MUST** sign in and scan the QR codes at the entrance, and collect your zone wristbands. All designated areas will have a QR code that **MUST** be scanned when using that area. Any guests who do not have a device to scan must complete a manual record of their attendance. Please update the names of anyone attending the show with you as you enter.
ALL persons must enter using the FLEET STREET entrance.
- ★ All those entering the grounds will be assigned a colour group / zone, and must wear a coloured wrist band at all times. You must park and use facilities in this zone, and can not move, nor mingle or socialise with those in another zone / coloured wrist band.
- ★ The show is closed to spectators. This is to ensure numbers are limited and we are able to meet the Covid-19 Level 2 requirements. Only competitors and their immediate support (such as groom or truck driver) may attend the event.
- ★ Physical distancing of at least 2 metres must be maintained at all times.
- ★ Face coverings are mandatory under the government's requirements. You must wear a mask in any indoor areas such as ablution blocks, the Secretary Office or

indoor yards. You must also wear a mask in outdoor areas where social distancing could be compromised, such as adjusting practice fences, at food caravans or water filling taps. If in doubt, please put a mask on. You are not required to wear a mask while you are riding, but are expected to keep a good distance from other riders.

- ★ Prizes will be presented in the rings wherever possible. You are asked to wear a mask for presentations, please.
- ★ Class changes and scratchings are to be **completed online** with main-events by 5 pm the night prior. Please avoid physically going to the Secretary office.
- ★ Please do not congregate in groups. Your support and commitment to Covid-19 requirements is super important to ensuring our sport can continue to operate under Level 2.
- ★ Good personal hygiene practices should continue - wash and dry your hands before and after activities, cough into your elbow and don't touch your face. Hand sanitiser will also be available for use.
- ★ Site Inductions will be conducted for all those on site during the event, including committee members, officials, contractors, guests and competitors. Competitors are asked to print the Induction Form and return it to the Wairarapa Jumping Group by email, or as you enter the grounds. A signed form is mandatory for you to enter the grounds.
- ★ Bathrooms will have signage from the Ministry of Health regarding good hygiene practices. You must only use the facilities designated to your zone. Check your wristband colour against the bathroom. Some toilets (including the showers under the grandstand) will be closed to show guests and must not be used. (This is due to them also being used by other visitors to the Solway grounds.) Please use your truck bathrooms wherever possible.
- ★ There will be a designated toilet area near the secretary office and adjacent hall for officials and organisers to use.
- ★ Failure to comply with these regulations may result in elimination and removal from the grounds.

Media / Photography - all

All attendees, whether an official photographer, rider, official, committee member or support person must take a careful and considered approach when posting to any social media during and after the show. Please check all photos to ensure they show full Covid-19 plan compliance before sharing them. A photo showing a judge without a mask while having a cup of tea could easily be taken out of context and cause investigation and scrutiny for the event. This could jeopardize all future equestrian (and other sporting) events. Check and check again before sharing. Thanks.

Face Coverings

Face coverings are legally required if you are aged 12 and over in certain circumstances. In an equestrian context, you must wear a face covering in any indoor areas such as ablution blocks, the Secretary Office or indoor yards. You must also wear a mask in outdoor areas where social distancing could be compromised, such as adjusting practice fences, at food caravans or water filling taps.

Coaches are expected to wear face coverings when in the warmup areas.

Officials are asked to wear face coverings.

You are not required to wear a mask while you are riding, but are expected to keep a good distance from other riders. You are required to wear a mask when attending a prize-giving.

If in doubt, please put a mask on.

If you are exempt from wearing a face covering, you are required to provide evidence of your exemption in writing to the show secretary by 5 pm Friday 22 October 2021.

Parking and Camping

All persons are to enter the grounds using the FLEET STREET entrance. Judds road will be closed and not available. This includes day parking and officials.

There are 7 designated parking and camping areas:

1. Yellow zone - Parking and camping for those requiring shower facility
2. Purple zone - Parking and camping for outdoor yards
3. Red zone - Parking and camping for (largely) covered yards
4. Blue zone - Parking and camping for (largely) covered yards
5. Black zone - Show Hunter camping and day parking
6. Grey zone - Officials, committee, volunteers, contractors parking and toilets

These areas are shown clearly on the attached map. Zones have been allocated to ensure no more than 100 people are allocated to each area. You will be provided with a colour coded wristband as you arrive and must wear this for the duration of the event. You need to park within your designated zone and remain in that location.

Each zone has designated yards, toilets, yarding and tap/hose. You must only use the facilities designated for your allocated zone, and **MUST NOT** enter another zone at any time. (Day parking may not have a hose available.)

Any person found outside of their designated zone will be immediately scratched and required to leave the grounds. No refunds will be provided if you are asked to leave, and ESNZ will be notified.

Food Areas

This will be considered part of the common/competition area. Masks are mandatory to place an order or collect food. You **MUST** sign in using the food stall's QR code. After placing your order, you must maintain at least 2 metres physical distancing whilst waiting for your order - then collect and leave the area as early as possible. Contactless payment should be used if possible. Masks may be removed to eat and drink so long as you are at least 2m from people not in your bubble.

Personal and Site Hygiene

General rubbish bins are not provided for this event. Each person must manage and remove their own rubbish from the grounds. Rubbish bins will only be provided at the food area and in toilets for the sole use of disposing of hand towels. No personal rubbish is to be placed in these bins.

All people on the grounds are expected to practice good hygiene:

- Avoid touching your face, particularly if your hands are not clean. Wash or sanitise your hands immediately if you do so
- Wash and dry hands with soap after using the toilet and before handling food. Sanitising should be completed as a secondary line of defence to hand washing
- Cough or sneeze into your elbow. This avoids the virus coming into contact with your hands and reduces the risk of you spreading it to other people
- Regularly clean surfaces that are touched frequently
- Maintain physical distancing
- Keep to your zone and only use the facilities allocated to your zone
- Advise the committee if you see any hygiene issues that require attention

Every person on the grounds has specific obligations under this response plan. Your completed Induction Form serves as confirmation you accept these obligations. Please remember that failure to comply with the show conditions and response plan will result in immediate removal from the grounds, and forfeit of entries and any associated fees.

Solway Safety Information and Requirements

The Solway Showgrounds is a multi-user environment, and has specific hazards to be aware of:

- ❖ Construction / damage to sheds adjacent to the entry road. Following a wind storm, these buildings have sustained significant damage and are unsafe. This area is cordoned off with safety tape. You must avoid this area and stay well outside of the cordoned off area. **In the event of wind over 100km/hr being forecast, we will review whether the event will run and may evacuate the grounds.**
- ❖ Several permanent toilet blocks are used by other visitors to the Solway Grounds. These are out of bounds for show attendees to try and reduce the risk of unknown contacts / transmission if community cases were to return. Where possible, people should use their own truck facilities.
- ❖ Shared walkways - pedestrians, vehicles and horses share common walkway areas. **Riders should** walk through these areas paying particular notice to pedestrians - and should wait or go off the track if possible when a vehicle is already committed to using it.
Pedestrians should walk at the sides, in single file, and give way to horses to reduce the risk of being knocked.
Vehicles should travel under 10 km/hr and should stop and turn off their engine should a horse become upset and/or unmanageable.
- ❖ Bikes (motorised or cycles) are to be ridden with a safety helmet at all times, and not exceed 10 km/hr. Motorised bikes are not to be ridden after 8 pm or before 6 am.
- ❖ Dogs have been identified as hazardous to the sheep and lambs on the grounds. Solway Showgrounds management requires that **no dogs** are to enter the grounds during the spring season.

Jumping Wairarapa Group



Induction Checklist - Labour Weekend Jumping Show 2021

Name: _____

Date: _____

Contact Number: _____

Vehicle Rego: _____

Support Person Name(s): _____

- I have received, read and understand my obligations under the Government's Covid-19 Alert Level 2 rules and guidelines, and those of the Response Plan for this event
- I have not had any Covid-19 symptoms in the last 14 days, nor am I awaiting a Covid-19 test result. I am not required to be isolated for any reason
- I have been informed of any site specific safety requirements and hazards for this site
- I will comply with social distancing of at least 2 metres and the face covering guidelines while at Solway Showgrounds
- I will remain within my allocated zone and use only those facilities designated to my zone at all times when not riding. I understand my allocated yard(s) can not be changed due to this.
- I will sign in via QR code or manual register on arrival at the grounds, and when using designated facilities displaying a QR code
- I understand my obligation to check any items I post to social media for appropriateness

Managing Covid-19 Risk

- Stay home if you feel unwell. If you become unwell during the show you agree to go home, and advise the show secretary
- Follow good hygiene practices, including washing and sanitising hands regularly
- You will ask the committee if you have any questions to ensure you understand the map and the designated areas, and your obligations under this Response Plan
- Failure to comply with show conditions and this Response Plan will mean you are scratched from the event and required to leave the grounds.

Once you are comfortable you understand your obligations and the requirements of the Wairarapa Jumping Group Labour Weekend show, please sign your acceptance:
(Competitors under 18 should have a parent/guardian sign for them)

Signed: _____

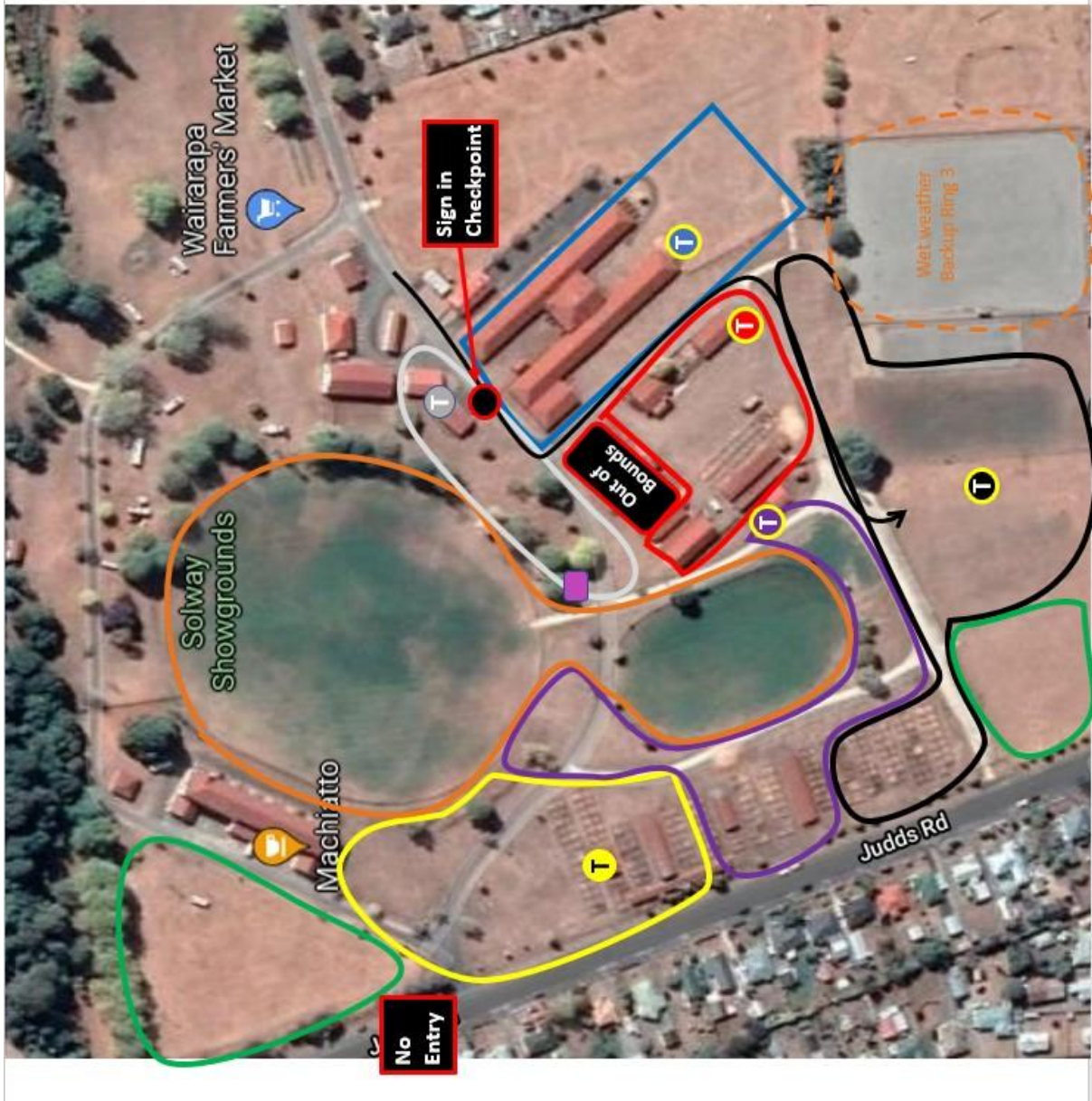
Date: _____

Name: _____

Competitor(s): _____

(If under 18)

Please ensure your details are correct and notify the Show Secretary immediately of any changes.



Key:

Yellow Zone + Ablutions/Shower

Purple Zone + Portaloos

Red Zone + Portaloos

Blue Zone + Portaloos

Grey Zone - Officials & organisers (sec office/ P&P Hall)

T - Toilets

Orange Zone - Show Jumping

Black Zone - Show Hunter & Day Parking + Portaloos
NOTE access route please

Green Zone - Warm up rings

Pink - Food stalls

Jumping Wairarapa Labour Weekend Jumping Championships - Covid Reponse Zone Map - 2021