



*New Zealand Hack & Pony Council*

*North Island  
Premier Showing  
Championships*

*Equidays, Mystery Creek,  
Hamilton*

**16-18th October 2015**



# 'Qualifier for Horse of the Year 2015'

**\*\*\*Entries Close on 9th October 2015\*\*\***

Enter online at [www.main-events.com](http://www.main-events.com)

## 2015 Judges:

**-Greg Gerry (Australia)    -Lisa Jones (Australia)**  
**-Maxine Mulligan (NZ)    -Wendy Freeman (NZ)**





## **GREG GERRY**

Greg lives in Ballan Vic and works as a property Valuer. He has owned and shown a number of horses and ponies, and breeds Riding Ponies under the Whitmere prefix. Greg has produced Horse of the Year winners in Hack, Galloway, Large and Small Pony sections, and has won Rider of the Year. Other major titles include EA Nationals and Grand National wins, and many championships at Royal Shows. In-hand ponies have also been produced to win many supremes at State and Royal Show level.

At this year's Sydney Royal the team won Champion Galloway and Champion Pony Hack.

Greg has also worked with ponies in the UK, and in that time assisted in the production of several top Show and Show Hunter ponies.

Finding young horses is a great passion and most of his success have been with horses and ponies that have started with Greg as youngsters, or been bought through from novice level.

Greg has judged at Sydney, Canberra and Melbourne Royals, at HOY Shows throughout Australia, and has also judged in New Zealand and the UK. He looks forward to being a part of the 2015 North Island Premier Showing Championship

## **LISA JONES**

Lisa is from Delaneys Creek, located in the beautiful Sunshine Coast Hinterland, Queensland. She commenced riding at the age of five years old when given a station bred quarter horse cross by her uncle – a pet her parents thought was going to stay out west on the cattle property!

Lisa primarily focused on training and competing dressage horses, regularly adding high point trophies to her collection, up until 1999 where she caught the bug of Show Horse riding after competing in her first Brisbane Royal Show (placing 3<sup>rd</sup> in her Open Lady Rider class).

In 2002 Lisa was selected in the augural EA QLD Show Horse Young Rider Squad, receiving training from Mr Vince Corvi. This led to Lisa spending a year working for Mr Vince Corvi and Mr Terry Cowan in 2003, gaining further valuable knowledge of the show horse industry. Since then, Lisa has had the opportunity to pilot a number of successful horses to wins at Royal Show and HOTY level in both Open and Hunter events.

Her success has continued in riding class events, having been sashed Champion Adult Rider four times now at EA QLD HOTY and six times at SHCQ's HOTY. She has placed in the top three in her riding events at Royal Shows across four states of Australia and has also been awarded both Champion and Reserve Lady Rider at Brisbane Royal over the years. She has also gained Top Five placings at SHC Grand Nationals.

Lisa has had a very high strike rate with producing Newcomer/Rising Star winners. She has also been influential in the starts of the careers of a number of other horses that have gone to success at the top levels with new owners. Janevelyn Moment of Truth, Farleigh Tarquin and Inquisition are a few notable examples.

Lisa is a Show Horse Australasia National Judge and has officiated at a number of Grand National qualifying events across the East Coast of Australia.

"I would like to take this opportunity to thank-you for inviting me to judge at your show this year, and I look forward to seeing all your beautiful horses"

## **MAXINE MULLIGAN**

Maxine has been judging showing classes since the late 1970s, following on from competing in her earlier years, Maxine was listed on the inaugural RAS Judges' list when it was first put together, as a List 1 Judge, becoming a Western District Tutor Judge in 2010. Some notable judging appointments are: Waikato Royal Show, Horse of the Year Show, Christchurch Show. Maxine has been Chief Steward of the Horse of the Year Show 2013, 2014 & 2015. Maxine was the first woman President of the Manawatu West Coast A&P, an Honorary Life Member and Western District Chairman 2013/2014.

## **WENDY FREEMAN**

Wendy has been involved in all things equestrian all her life.

Hunting for 25 years, showing 20 years, achieving Hack of the year and competing Dressage for 20 years. Wendy and her husband have a horse stud 'Bilbar Lodge' in the Manawatu and stood the stallion Anamour until his death April 15.

# North Island Premier Showing Championships

Equidays  
Mystery Creek  
P O Box 25  
Matangi  
Hamilton 3260  
[nzhackandpony@hotmail.com](mailto:nzhackandpony@hotmail.com)

## Overall Conditions

This show will be run under RAS rules and has adopted the RAS yellow card system.

### LIABILITY

The Organising Committee accepts no liability for any accident, damage, injury or illness to ponies, horses, owners, riders, handlers, grooms or spectators, or to any other personal property whatsoever. Each exhibitor must supervise and control their animals at all times and shall be liable for any hazards created or accident, illness or damage caused by the action of themselves or their animals at the Venues. Exhibitors must comply with the appropriate Animal Legislation and the Health and Safety in Employment Act 1992.

### GENERAL

- NO DOGS are permitted on the Mystery Creek Grounds.
- Once judging starts for the day, rings can only be used whilst judging.
- The committee reserves the right to amalgamate or split classes depending upon number of entries received.
- If a horse or pony misbehaves to the extent that it unduly disturbs other competitors it will be asked to leave the ring.
- The Senior Steward in charge may, at their discretion, transfer an entry to its appropriate class where it is found to be wrongly entered.
- All exhibits in ridden classes must be 3 years old and over.
- A horse entered in the novice section may enter in the open section.
- Novice ponies may be ridden by an adult in the novice section. Adults may only compete on a pony in the novice section only – NO EXCEPTIONS
- ALL competitors must park their floats and trucks in the area designated for this purpose – NO EXCEPTIONS.
- Competitors may ride more than one horse or pony in championship title classes with the exception of Lead Rein and First Ridden titles. Any horse/pony not parading on the circle as required will be eliminated.
- Number holders are compulsory. Competitors to supply their own numbers
- Classes will not be held for a competitor or exhibit competing in another ring.
- Protest: All objections or protests must be lodged within an hour of the class accompanied with a \$50 fee to the head steward. Official protest forms are available at the show office.

### FORBIDDEN SUBSTANCES

- The attention of the exhibitors is particularly drawn to the conditions relating to the misuse of drugs and the intention of the committee to undertake testing for forbidden substances. Your signature on the entry form and/or participation in the competition denotes your acceptance of these conditions.

### ENTRIES

Entries close 5pm 9th October 2015. NO LATE ENTRIES WILL BE ACCEPTED ON SHOW DAY.

- All entries and other fees to be paid in full at time of entry or entry will not be accepted.

#### **Purchase of Catalogue is compulsory.**

- The cost of Catalogues must be paid for with entries. Catalogues will be available from 7.30am on show morning.
- A copy of a current height/performance certificate for each horse or pony must be carried and presented to the head steward at the ring prior to the class starting & entering the ring or entry will be refused, with no refund.
- Novice horses/ponies must carry a copy of their performance card with them on show day. The definition of novice – classes for horses or ponies that have yet to win 6 classes in any division within the competitions provided at any A&P show/event. They may have competed in an open section.



Certificate prior to 8.30am on show day and will be paid out one month after the show.

- The committee reserve the right to refuse or cancel any entry or refund without adjudicating any reason for doing so.
- **Compulsory NZ Hack & Pony Council Membership \$10, must be included with entry to compete at the show.**
  - Prize Money may be substituted for prizes at the discretion of the show committee. The committee have the discretion to merge classes if required.

Non Championship class- prize money will be scaled as follows:

1 entry	1 <sup>st</sup>	\$15
2 entries	1 <sup>st</sup> , 2 <sup>nd</sup>	\$20, \$10
3 entries	1 <sup>st</sup> , 2 <sup>nd</sup>	\$25, \$15
4 entries	1 <sup>st</sup> , 2 <sup>nd</sup> , 3 <sup>rd</sup>	\$30, \$20, \$10

Entry Fee for these classes \$12 incl RAS Levy

- When entering online you are accepting the rules stated in this schedule.
- **ALL Novice competitors must enter and compete in either the Pony or Horse Novice Challenge. Failure to participate in this class will result in a forfeit of all prize money and awards/qualifications**

- **ALL Open competitors must enter and compete in the championship classes on Sunday. Failure to participate in this class will result in a forfeit of all prize money and awards/qualifications**

- Substitutions of any entry can only be made at the discretion of the show committee.

#### STABLING/CAMPING/COMPETITOR PASS

Stable fees/Ground Levies/Camping

- Yard fees charged by Equidays are \$35 per yard for duration of show. Please leave your yards clean on departure.
- All manure must be placed in bins supplied. Bring your own tools to muck out.

Camping: Non Powered - FREE, Powered sites \$60.00 for duration of show

Competitors pass for show duration:

Once you have paid your NZ Hack & Pony Council Membership of \$10, we are able to offer a great discount for the Equidays entry tickets:

One horse/pony = \$50.00 and you get 2 x 3 day passes (ACTUAL VALUE \$120), saving \$70.00

Two horses/ponies = \$60.00 and you get 2 x 3 day passes (ACTUAL VALUE \$120), saving \$60.00

Three horses/ponies = \$90.00 and you get 3 x 3 day passes (ACTUAL VALUE \$180), saving \$90.00

Gates open every day of show at 6.30am and entrance is via gate # 2, no access prior to this time. Registration packs can be collected from gate 1 upon arrival.

#### RING SIZE AND WORKOUTS

- Ring One – 80x35
- Ring Two – 40x28
- Ring Three – 28x27

The workouts will be published on line by 1<sup>st</sup> October for the championship classes. Judges for the championship classes will be different to those on the lead up days. The championship classes will be judged as follows: workout on circle, individual workouts, led component.

#### NOVICE CHALLENGE

- This class is opened to novice horses/ponies, who have not exceeded six wins in the Novice Section, ie: if you have had a Champion in the open section but have not exceeded your Novice wins you are still eligible to enter. It is competitor's choice whether to use a snaffle or a double in this class. This class is to be judged on quality and confirmation. The class will be judged as follows: workout on circle, individual workouts, led component. Rider and Handler must be the same person for both the led and ridden components. Horse challenge is open to all novice Hacks, Park Hacks, Riding Horses & Saddle Hunters. Pony Challenge is open to all novice Show Ponies & Saddle Hunter Ponies.



## **Sponsors:**

Pryde's EasiFeed

Palamountains

Fourflax

Villa Park

Cambridge Equestrian

Waipa District Council

Garrards

Equestrian Elegance

Hanley Formula

Showshots

Gosford Park

Livamol

Michelle Lang

Awatere Farm

Tropicana Lodge

Beyond the Barriers

Richard Gibbons-Goodhew Farrier

Kelaray Stud

FMG Insurance

Cadwallader Family

Cabernet Foods

MP Gloss

Hygain

Bekaysee Equine

Biobrew



## **Pryde's EasiFeed Grand Champion Ridden Exhibit**

**\$1,000 Cash, Rug, Garland and "Lisa  
Chittick Memorial" Trophy**

**Sunday 3.00pm Main Indoor Arena**

**The following Winners qualify.**

**Open Hack, Open Park Hack, Open Riding Horse, Open Saddle Hunter Horse  
Open 128cm Show Pony, Open 138cm Show Pony, Open 148cm Show Pony  
Open 128cm Saddle Hunter Pony, Open 138cm Saddle Hunter Pony and  
Open 148cm Saddle Hunter Pony.**

## **Palamountains Grand Champion Led Exhibit**

**\$200 Cash, Rug, Garland and Trophy**

**Saturday 11.30am Ring 1**

**The following Winners qualify.**

**Led Youngstock Horse, Led Adult Horse,  
Led Warmblood, Led Thoroughbred  
Led Youngstock Pony, Led Adult Pony,  
Led Purebred Welsh Pony, Led Partbred Welsh Pony,**



## **Villa Park Equine Novice Pony Challenge**

**\$500 Cash, Rug, Garland and Trophy**

**Top six finalists \$25**

**Friday 2.30pm Ring 1**

This class is opened to all novice show & saddle hunter ponies, who have not exceeded six wins in the Novice Section, ie: if you have had a Champion in the open section but have not exceeded your Novice wins you are still eligible to enter. It is competitor's choice whether to use a snaffle or a double in this class. This class is to be judged on quality and confirmation. The class will be judged as follows: workout on circle, individual workouts, led component. Rider & Handler must be the same person for both the led & ridden components.

## **Cabernet Foods Novice Horse Challenge**

**\$500 Cash, Rug, Garland and Trophy**

**Top six finalists \$25**

**Saturday 4.00pm Ring 1**

This class is opened to all novice Hacks, Park Hacks, Riding Horses & Saddle Hunters horses, who have not exceeded six wins in the Novice Section, ie: if you have had a Champion in the open section but have not exceeded your Novice wins you are still eligible to enter. It is competitor's choice whether to use a snaffle or a double in this class. This class is to be judged on quality and confirmation. The class will be judged as follows: workout on circle, individual workouts, led component. Rider & Handler must be the same person for both



### Timetable Friday 16th October 2015

Estimated start ring 1	Ring 1	estimated start times ring 2	Ring 2	estimated start times ring 3	Ring 3
9.00am	over 138-148cm Show Pony			9.00am	First Ridden
		9.30am	Over 138-148cm Saddle Hunter Pony		Title class rider Title class first ridden
10.30am 11.00am	over 128-138cm Show Pony	11.00am	over 128-138cm Saddle Hunter Pony	11.00am	Lead rein
12pm	LUNCH		LUNCH		
1pm	up to 128cm Show Pony	1pm	up to 128cm Saddle Hunter Pony		Title class rider Title class Lead Rein
2.30PM	NOVICE PONY CHALLENGE				

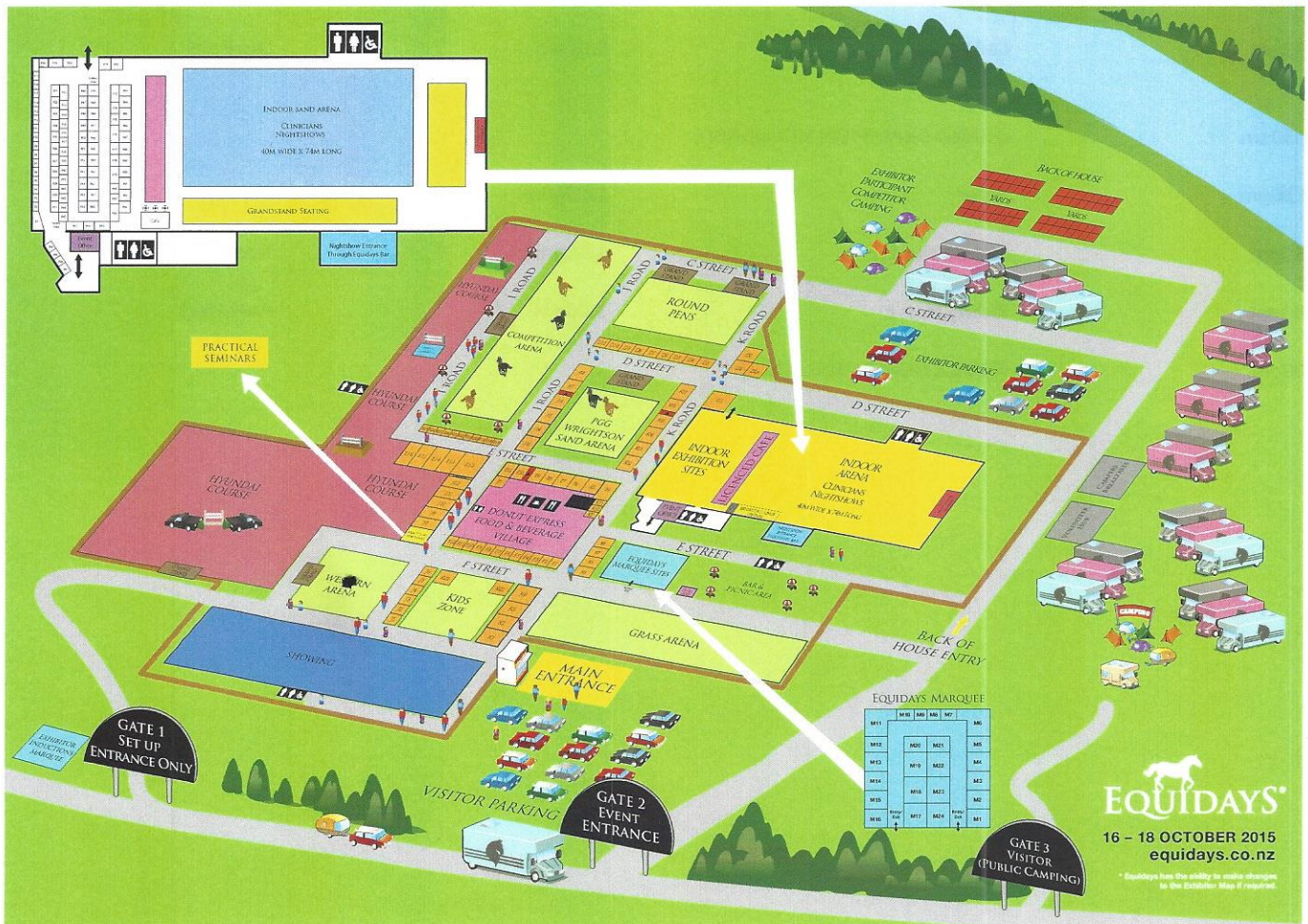
### Timetable Saturday 17th October 2015

Estimated start times ring 1	Ring one	Estimated start times ring 1	Ring Two
9.00am	Led Horse	9.00am	Led Pony
11.30am	GRAND CHAMPION LED EXHIBIT		
12.30pm	Rider	12.30pm	Rider
1.30pm	Saddle Hunter	1.30pm	Hack
3.00pm	Riding Horse	3.00pm	Park Hack
4.00pm	NOVICE HORSE CHALLENGE		



## Timetable Sunday 18th October 2015

Estimated start times only	Ring One	Ring Two	Ring three
9.00am	Saddle Hunter Horse	14.2 Saddle Hunter Pony	12.2 Show Pony
10.00am	Hack	13.2 Show Pony	12.2 Saddle Hunter Pony
11.00am	Park Hack	13.2 Saddle Hunter Pony	
12.00pm	LUNCH	LUNCH	LUNCH
12.30pm	Riding Horse	14.2 Show Pony	
1.30pm	OTT unraced over 2 yrs in show ring OTT Raced over 2yrs in show ring	OTT unraced under 2yrs in show ring OTT Raced under 2yrs in show ring	
3.00pm	<b>Main Indoor Arena - Grand Champion Ridden Exhibit All Judges</b>		





# Pryde's EasiFeed Ridden Pony

Friday, 16 October 2015

**Ring 1**

**09:00 AM**

## **Show Pony over 138 & not over 148cm**

- |     |   |             |             |
|-----|---|-------------|-------------|
| 1   | 0-2 Wins Novice Show Pony over 138-148cm                    | EF: \$12.00 |             |
| 2   | 0-5 Wins Novice Show Pony over 138-148cm                    | EF: \$12.00 |             |
|     | Champion & Reserve Champion Novice Show Pony over 138-148cm |             |             |
|     | <i>Winners from class 1 &amp; 2. Seconds to standby</i>     |             |             |
| 3   | Show Pony over 138-143cm                                    | EF: \$12.00 |             |
| 4   | Show Pony over 143-148cm                                    | EF: \$12.00 |             |
|     | Champion & Reserve Champion Show Pony over 138-148cm        |             |             |
|     | <i>Winners from class 3 &amp; 4, Seconds to standby</i>     |             |             |
| 128 | Novice Paced & Mannered 0-5wins show pony over 138-148cm    |             | EF:\$12.00  |
| 5   | Paced & Mannered Show Pony over 138-148cm                   |             | EF: \$12.00 |

**Ring 1**

**10:30 AM**

## **Show Pony over 128 & not over 138cm**

- |     |   |             |             |
|-----|---|-------------|-------------|
| 6   | 0-2 Wins Novice Show Pony over 128-138cm                    | EF: \$12.00 |             |
| 7   | 0-5 Wins Novice Show Pony over 128-138cm                    | EF: \$12.00 |             |
|     | Champion & Reserve Champion Novice Show Pony over 128-138cm |             |             |
|     | <i>Winners from class 6 &amp; 7, Seconds to standby</i>     |             |             |
| 8   | Show Pony over 128-133cm                                    | EF: \$12.00 |             |
| 9   | Show Pony over 133-138cm                                    | EF: \$12.00 |             |
|     | Champion & Reserve Champion Show Pony over 128-138cm        |             |             |
|     | <i>Winners from class 8 &amp; 9, seconds to standby</i>     |             |             |
| 127 | Novice Paced & Mannered 0-5wins show pony over 128-138cm    |             | EF:\$12.00  |
| 10  | Paced & Mannered Show Pony over 128-138cm                   |             | EF: \$12.00 |



**Ring 1****1:00 PM****Show Pony 128cm and under**

11	0-2 Wins Novice Show Pony 128cm and under	EF: \$12.00
12	0-5 Wins Novice Show Pony 128cm and under	EF: \$12.00
	Champion & Reserve Champion Novice Show Pony up to 128cm	
	<i>Winners from class 11 &amp; 12, seconds to standby</i>	
13	Show Pony 123cm and under	EF: \$12.00
14	Show Pony over 123-128cm	EF: \$12.00
	Champion & Reserve Champion Show Pony 128cm and under	
	<i>Winners from class 13 &amp; 14, seconds to standby</i>	
126	Novice Paced & Mannered show pony 0-5wins 128cm & Under	EF:\$12.00
15	Paced & Mannered Show Pony 128cm & under	EF: \$12.00

**Ring 2****09:30 AM****Saddle Hunter Pony over 138-148cm**

16	0-2 Wins Novice Saddle Hunter Pony over 138-148cm	EF: \$12.00
17	0-5 Wins Novice Saddle Hunter Pony over 138-148cm	EF: \$12.00
	Champion & Reserve Champion Novice Saddle Hunter Pony over 138-148cm	
	<i>Winners from class 16 &amp; 17, seconds to standby</i>	
18	Saddle Hunter Pony over 138-143cm	EF: \$12.00
19	Saddle Hunter Pony over 143-148cm	EF: \$12.00
	Champion & Reserve Champion Saddle Hunter Pony over 138-148cm	
	<i>Winners from class 18 &amp; 19, seconds to standby</i>	
131	Novice Paced & Mannered 0-5wins Saddle hunter Pony over 138-148cm	EF:\$12.00
20	Paced & Mannered Saddle Hunter Pony over 138-148cm	EF: \$12.00

**WAIPA**  
**HOME OF CHAMPIONS**



**Ring 2****11:00 AM****Saddle Hunter Pony over 128-138cm**

- |     |  |             |
|-----|--|-------------|
| 21  | 0-2 Wins Novice Saddle Hunter Pony over 128-138cm                    | EF: \$12.00 |
| 22  | 0-5 Wins Novice Saddle Hunter Pony over 128-138cm                    | EF: \$12.00 |
|     | Champion & Reserve Champion Novice Saddle Hunter Pony over 128-138cm |             |
|     | <i>Winners from class 21 &amp; 22, seconds to standby</i>            |             |
| 23  | Saddle Hunter Pony over 128-133cm                                    | EF: \$12.00 |
| 24  | Saddle Hunter Pony over 133-138cm                                    | EF: \$12.00 |
|     | Champion & Reserve Champion Saddle Hunter Pony over 128-138cm        |             |
|     | <i>Winners from class 23 &amp; 24, seconds to standby</i>            |             |
| 130 | Novice Paced & Mannered 0-5wins Saddle Hunter Pony Over 128-138cm    | EF:\$12.00  |
| 25  | Paced & Mannered Saddle Hunter Pony Over 128-138cm                   | EF: \$12.00 |

**Ring 2****1:00 PM****Saddle Hunter Pony 128cm and under**

- |     |   |             |
|-----|---|-------------|
| 26  | 0-2 Wins Novice Saddle Hunter Pony 128cm and under                    | EF: \$12.00 |
| 27  | 0-5 Wins Novice Saddle Hunter Pony 128cm and under                    | EF: \$12.00 |
|     | Champion & Reserve Champion Novice Saddle Hunter Pony 128cm and under |             |
|     | <i>Winners from class 26 &amp; 27, seconds to standby</i>             |             |
| 28  | Saddle Hunter Pony 123cm and under                                    | EF: \$12.00 |
| 29  | Saddle Hunter Pony over 123-128cm                                     | EF: \$12.00 |
|     | Champion & Reserve Champion Saddle Hunter Pony 128cm and under        |             |
|     | <i>Winners from class 28 &amp; 29, seconds to standby</i>             |             |
| 129 | Novice Paced & Mannered 0-5wins Saddle Hunter Pony 128cm and under    | EF:\$12.00  |
| 30  | Paced & Mannered Saddle Hunter Pony 128cm and under                   | EF: \$12.00 |





**Ring 1**

**02:30 PM**

**SPECIAL CLASS**

**NI Premier Novice Pony Challenge**

**EF: \$25.00 PM: \$ 500, 25, 25, 25, 25, 25**

*There will be a led element and a ridden component. Rider and handler must be the same person for both the led & ridden components in the novice challenge.*

*Top Six placings receive prize money and Ribbons*

**NOVICE CHALLENGE**

- This class is opened to novice ponies, who have not exceeded six wins in the Novice Section, ie: if you have had a Champion in the open section but have not exceeded your Novice wins you are still eligible to enter. It is competitor's choice whether to use a snaffle or a double in this class. This class is to be judged on quality and confirmation. The class will be judged as follows: workout on circle, individual workouts, led component. Rider and Handler must be the same person for both the led and ridden components. Pony Challenge is open to all novice Show Ponies & Saddle Hunter Ponies.





# First Ridden Combination

First Ridden Ponies not to exceed 138cm and must be ridden in a snaffle bridle with a cavesson noseband, an acceptable snaffle bit & single rein.

This section is for riders under 10 years old that have not competed in an open section at any A&P or RAS affiliated show.

A First Ridden Pony may compete in the open ring with a different rider.

All ponies to walk and trot in company but may be asked to canter in their individual workout.

The same combination cannot enter in both Lead Rein section and First Ridden but a pony that has been entered in Lead Rein section can be entered in First Ridden with a different rider.

In this section the judging criteria is 60% suitability, temperament & safeness and 40% confirmation and paces.

**Friday, 16 October 2015**

**Ring 3**

**09:00 AM**

31	Novice First Ridden 0-5 wins	
32	First Ridden Pony under 128cm	EF: \$12.00
33	First Ridden Pony over 128-138cm	EF: \$12.00
	Champion & Reserve Champion First Ridden	
	<i>Winners from class 31-33, seconds to standby</i>	
116	Novice Paced & Mannered First Ridden 0-5wins	EF: \$12.00
34	Paced & Mannered First Ridden	EF: \$12.00
117	Novice Rider, First Ridden 0-5wins	EF: \$12.00

## **SPECIAL CLASSES**

- 35 **NI PREMIER FIRST RIDDEN RIDER** EF: \$25.00 PM: \$ 125, 85, 50, 40  
*Champion receives sash and Voucher from Equestrian Elegance. Reserve Champion sash & prize. Ribbons to 6th place.*
- 36 **NI PREMIER FIRST RIDDEN PONY** EF: \$25.00 PM: \$ 125, 85, 50, 40  
*Champion and Reserve Champion receive a rug, sash, Prydes feed and ribbons to 6th place. Best Presented ribbon and prize*



# Lead Rein

Combinations in this section may not enter any other section.

Lead Rein ponies not to exceed 128cm.

Riders must be under 8 years of age, with a minimum age of 4 years.

Ponies are to be led by a leader/attendant 14 years and over.

The leading rein is to be attached to the cavesson noseband of a simple snaffle bridle with an acceptable snaffle bit.

Ponies will be asked to walk and trot, no cantering under any circumstances.

Riders can only compete on one pony.

**Friday, 16 October 2015**

**Ring 3**

**11:00 AM**

- |    |   |             |
|----|---|-------------|
| 37 | Novice Lead Rein 0-5 wins                           |             |
| 38 | Lead Rein Pony not exceeding 123cm                  | EF: \$12.00 |
| 39 | Lead Rein Pony over 123-128cm                       | EF: \$12.00 |
|    | Champion & Reserve Champion Lead Rein               |             |
|    | <i>Winners from class 37-39, seconds to standby</i> |             |
| 40 | Paced & Mannered Lead Rein                          | EF: \$12.00 |

## **SPECIAL CLASSES**

- |    |   |                    |                               |
|----|---|--------------------|-------------------------------|
| 41 | <b>NI PREMIER LEAD REIN RIDER</b>   | <b>EF: \$25.00</b> | <b>PM: \$ 125, 85, 50, 40</b> |
|    | <i>Champion receives sash and voucher from Equestrian Elegance. Reserve Champion sash &amp; prize. Ribbons to 6th place.</i>    |                    |                               |
| 42 | <b>NI PREMIER LEAD REIN PONY</b>  | <b>EF: \$25.00</b> | <b>PM: \$ 125, 85, 50, 40</b> |
|    | <i>Champion and Reserve Champion receive a rug, sash, Prydes feed and ribbons to 6th place. Best Presented ribbon and prize</i> |                    |                               |





# FMG Insurance Rider

Saturday, 17 October 2015

## Ring 1

12.30 PM

132	Novice Rider 0-5wins	EF: \$12.00
51	Rider 17-21 yrs	EF: \$12.00
52	Rider over 21 yrs	EF: \$12.00

Champion & Reserve champion Senior Rider

*Winners from class 51, 52, 132, seconds to standby*

## Ring 2

12.30PM

133	Novice Junior Rider 0-5wins	EF: \$12.00
53	Rider 11yrs and under	EF: \$12.00
54	Rider 12, 13 & 14yrs	EF: \$12.00
55	Rider 15-16yrs	EF: \$12.00

Champion & Reserve Champion Junior Rider

*Winners from class 53-55, 133 seconds to standby*



# Palamountains Led Horse

Saturday, 17 October 2015

**Ring 1**

**9:00 AM**

- |    |   |             |
|----|---|-------------|
| 60 | Led Horse Yearling to mature over 148cm | EF: \$12.00 |
| 61 | Led Horse 2 yrs to mature over 148cm    | EF: \$12.00 |
| 62 | Led Horse 3 yrs to mature over 148cm    | EF: \$12.00 |

Champion & Reserve Champion  
Youngstock Horse

*Winners from class 60-62, seconds to standby*

- |    |   |             |
|----|---|-------------|
| 63 | Led Horse Dry Mare 4yrs & over,<br>over 148cm | EF: \$12.00 |
| 64 | Led Horse Gelding 4yrs & Over,<br>over 148cm  | EF: \$12.00 |

Champion & Reserve Champion Adult  
Horse

*Winners from class 63,64, seconds to standby*

NI Premier SUPREME LED HORSE

*To be judged from winners of Champion Youngstock Horse and Champion Adult Horse. Winner to receive sash and trophy*

## **SPECIAL CLASSES**

- |    |                             |             |
|----|-----------------------------|-------------|
| 65 | NI PREMIER LED WARMBLOOD    | EF: \$12.00 |
| 66 | NI PREMIER LED THOROUGHBRED | EF: \$12.00 |



**Scientific Nutrition**

**palaMOUNTAINS®**



# Palamountains Led Pony

Saturday, 17 October 2015

## Ring 2

9:00 AM

- |    |                                       |             |
|----|---------------------------------------|-------------|
| 67 | Led Pony Yearling not exceeding 140cm | EF: \$12.00 |
| 68 | Led Pony 2 yrs not exceeding 146cm    | EF: \$12.00 |
| 69 | Led Pony 3 yrs not exceeding 148cm    | EF: \$12.00 |

Champion & Reserve Champion  
Youngstock Pony

*Winners from class 67-69, seconds to standby*

- |    |   |             |
|----|---|-------------|
| 70 | Led Pony Dry Mare 4yrs & Over not exceeding 148cm | EF: \$12.00 |
| 71 | Led Pony Gelding 4yrs & over not exceeding 148cm  | EF: \$12.00 |

Champion & Reserve Champion Adult  
Pony

*Winners from class 70,71, seconds to standby*

NI Premier SUPREME LED PONY

*To be judged from winners of Champion Youngstock Pony and Champion Adult Pony. Winner to receive sash and trophy*

## SPECIAL CLASSES

- |    |                               |             |
|----|-------------------------------|-------------|
| 72 | NI Premier LED PUREBRED WELSH | EF: \$12.00 |
| 73 | NI Premier LED PARTBRED WELSH | EF: \$12.00 |

## Ring 1

11:00 AM

### GRAND CHAMPION LED EXHIBIT

PM: \$ 200

*Winners of youngstock horse, adult horse, warmblood, thoroughbred, youngstock pony, adult pony, youngstock welsh & adult welsh are eligible for Grand champion led exhibit. To receive, rug, garland, \$200.00 cash and trophy. Failure to participate in this class will result in a forfeit of all prize money and awards/qualifications*



Scientific Nutrition

**palaMOUNTAINS**

# Pryde's EasiFeed Ridden Horse

Saturday, 17 October 2015

Ring 2

1:30 PM

## HACKS

75	0-2 Wins Novice Hack over 158cm	EF: \$12.00
76	0-5 Wins Novice Hack over 158cm	EF: \$12.00
	Champion & Reserve Champion Novice Hack	
	<i>Winners from class 75,76, seconds to standby</i>	
78	Hack over 158 & up to 163cm	EF: \$12.00
79	Hack over 163cm	EF: \$12.00
119	Open Lady's or Gentleman's Hack on type	EF;\$12.00
	(may be ridden by a lady or gentleman)(conformation class)	
	Champion & Reserve Champion Hack	
	<i>Winners from class 78, 79, 119 seconds to standby</i>	
122	Novice Paced & Mannered Hack 0-5wins	EF:\$12.00
80	Paced & Mannered Hack	EF: \$12.00

Ring 1

1.30 PM

## SADDLE HUNTER HORSE

88	0-2 Wins Novice Saddle Hunter Horse over 148cm	EF: \$12.00
89	0-5 Wins Novice Saddle Hunter Horse over 148cm	EF: \$12.00
	Champion & Reserve Champion Novice	
	Saddle Hunter Horse	
	<i>Winners from class 88,89, seconds to standby</i>	
91	Saddle Hunter Horse over 148 & up to 163cm	EF: \$12.00
92	Saddle Hunter Horse over 163cm	EF: \$12.00
120	Open Lady's or Gentleman's Saddle Hunter Horse on type	EF;\$12.00
	(may be ridden by a lady or gentleman)(conformation class)	
	Champion & Reserve Champion Saddle	
	Hunter Horse	
	<i>Winners from class 91, 92,120, seconds to standby</i>	
124	Novice Paced & Mannered Saddle Hunter horse 0-5wins	EF:\$12.00
93	Paced & Mannered Saddle Hunter Horse	EF: \$12.00



## Saturday, 17 October 2015

Ring 2

3.00 PM

### PARK HACK

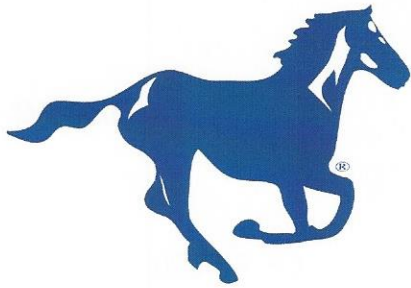
81	0-2 Wins Novice Park Hack over 148cm & up to 158cm	EF: \$12.00
82	0-5 Wins Novice Park Hack over 148cm & up to 158cm	EF: \$12.00
	Champion & Reserve Champion Novice Park Hack	
	<i>Winners from class 81, 82, seconds to standby</i>	
84	Park Hack over 148 & up to 153cm	EF: \$12.00
85	Park Hack over 153 & up to 158cm	EF: \$12.00
118	Open Lady's or Gentleman's Park Hack on type (may be ridden by a lady or gentleman)(conformation class)	EF;\$12.00
	Champion & Reserve Champion Park Hack	
	<i>Winners from class 84, 85, 118, seconds to standby</i>	
123	Novice Paced & Mannered Park Hack 0-5wins	EF:\$12.00
87	Paced & Mannered Park Hack	EF: \$12.00

Ring 1

03:00 PM

### RIDING HORSE

94	0-2 Wins Novice Riding Horse over 148cm	EF: \$12.00
95	0-5 Wins Novice Riding Horse over 148cm	EF: \$12.00
	Champion & Reserve Champion Novice Riding Horse	
	<i>Winners from class 94,95, seconds to standby</i>	
97	Riding horse over 148 & up to 158cm	EF: \$12.00
98	Riding Horse over 158 & up to 163cm	EF: \$12.00
99	Riding Horse over 163cm	EF: \$12.00
121	Open Lady's or Gentleman's Riding Horse on type (may be ridden by a lady or gentleman)(conformation class)	EF;\$12.00
	Champion & Reserve Champion Riding Horse	
	<i>Winners from class 97, 98, 99, 121, seconds to standby</i>	
125	Novice Paced & Mannered Riding Horse 0-5wins	EF:\$12.00
100	Paced & Mannered Riding Horse	EF: \$12.00



**HYGAIN**<sup>®</sup>  
FEEDING CHAMPIONS SINCE 1983

**SPECIAL CLASSES**

**Ring 1**

**NI Premier Novice Horse Challenge**

**04:00 PM**

**EF: \$25.00 PM: \$ 500, 25, 25, 25, 25, 25**

*There will be a led element and a ridden component. Rider and handler must be the same person for both the led & ridden components in the novice challenge.*

*Top Six placings receive prize money and Ribbons*

**NOVICE CHALLENGE**

• This class is opened to novice horses, who have not exceeded six wins in the Novice Section, ie: if you have had a Champion in the open section but have not exceeded your Novice wins you are still eligible to enter. It is competitor's choice whether to use a snaffle or a double in this class. This class is to be judged on quality and confirmation. The class will be judged as follows: workout on circle, individual workouts, led component. Rider and Handler must be the same person for both the led and ridden components. Horse challenge is open to all novice Hacks, Park Hacks, Riding Horses & Saddle Hunters.





# Pryde's EasiFeed Championship Day

Sunday, 18 October 2015

## Ring 1

09:00 AM

- 102 **NI PREMIER SADDLE HUNTER HORSE** EF: \$25.00 PM: \$ 125, 85, 50, 40  
*Champion and Reserve Champion receive a rug, sash, Prydes feed and ribbons to 6th place. Best Presented ribbon and prize.*
- 103 **NI PREMIER HACK** EF: \$25.00 PM: \$ 125, 85, 50, 40  
*Champion and Reserve Champion receive a rug, sash, Prydes feed and ribbons to 6th place. Best Presented ribbon and prize.*
- 104 **NI PREMIER PARK HACK** EF: \$25.00 PM: \$ 125, 85, 50, 40  
*Champion and Reserve Champion receive a rug, sash, Prydes feed and ribbons to 6th place. Best Presented ribbon and prize.*
- 105 **NI PREMIER RIDING HORSE** EF: \$25.00 PM: \$ 125, 85, 50, 40  
*Champion and Reserve Champion receive a rug, sash, Prydes feed and ribbons to 6th place. Best Presented ribbon and prize.*

## Ring 2

09:00 AM

- 110 **NI PREMIER SADDLE HUNTER PONY Over 138 & up to 148cm** EF: \$25.00 PM: \$ 125, 85, 50, 40  
*Champion and Reserve Champion receive a rug, sash, Prydes feed and ribbons to 6th place. Best Presented ribbon and prize.*
- 111 **NI PREMIER SADDLE HUNTER PONY Over 128 & up to 138CM** EF: \$25.00 PM: \$ 125, 85, 50, 40  
*Champion and Reserve Champion receive a rug, sash, Prydes feed and ribbons to 6th place. Best Presented ribbon and prize.*
- 114 **NI PREMIER SHOW PONY over 128 & up to 138CM** EF: \$25.00 PM: \$ 125, 85, 50, 40  
*Champion and Reserve Champion receive a rug, sash, Prydes feed and ribbons to 6th place. Best Presented ribbon and prize.*
- 115 **NI PREMIER SHOW PONY over 138 & up to 148CM** EF: \$25.00 PM: \$ 125, 85, 50, 40  
*Champion and Reserve Champion receive a rug, sash, Prydes feed and ribbons to 6th place. Best Presented ribbon and prize.*

## Ring 3

10:00 AM

- 112 **NI PREMIER SADDLE HUNTER PONY 128CM and under** EF: \$25.00 PM: \$ 125, 85, 50, 40  
*Champion and Reserve Champion receive a rug, sash, Prydes feed and ribbons to 6th place. Best Presented ribbon and prize.*
- 113 **NI PREMIER SHOW PONY 128CM and under** EF: \$25.00 PM: \$ 125, 85, 50, 40  
*Champion and Reserve Champion receive a rug, sash, Prydes feed and ribbons to 6th place. Best Presented ribbon and prize.*



## **Pryde's EasiFeed Grand Champion Ridden Exhibit**

**Sunday, 18 October 2015**

***Indoor Arena***

***03:00 PM***

**Lisa Chittick Memorial Grand Champion Ridden  
Exhibit**

**PM: \$ 1000**

*Winners of Classes (102-105) & (110-113) are eligible for Grand champion ridden exhibit. To receive, \$1,000 cash, rug, garland and trophy. Failure to participate in this class will result in a forfeit of all prize money and awards/qualifications.*





## **DUNSTAN EX-FACTOR 2015**

### **Thoroughbred Series**

#### **Off The Track Thoroughbred Series**

**Sunday, 18 October 2015**

**Ring 1**

**01:30 PM**

- 108 Unraced OTT Thoroughbred up to 2 seasons EF: \$10.00 PM: \$ 40, 30, 20, 10  
in the Show Ring
- 109 Unraced OTT Thoroughbred 3 seasons and over EF: \$10.00 PM: \$ 40, 30, 20, 10  
in the Show Ring

**Ring 2**

**01:30 PM**

- 106 Raced OTT Thoroughbred up to 2 seasons EF: \$10.00 PM: \$ 40, 30, 20, 10  
in the Show Ring
- 107 Raced OTT Thoroughbred 3 seasons and over EF: \$10.00 PM: \$ 40, 30, 20, 10  
in the Show Ring

Beyond the Barriers OTT Thoroughbred Championship  
Winner to receive rug, sash & garland

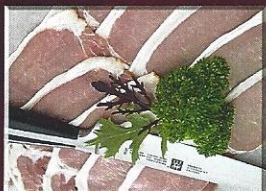


*Pirongia*

# PURE BACON

*Traditional classic taste*

Traditionally cured with a Honey brine and Manuka smoke, creating a dry but succulent Bacon that brings memories of how it used to be... simply delicious.



From a professional chef to a home style cook, we'll produce and cater for any food enthusiast. Our production team will process and package the Pirongia Pure Bacon at it's highest quality and deliver to the customer with our own refrigeration distribution fleet. Our Pirongia Pure Bacon Products include...

- MIDDLE • STREAKY • SHOULDER
- BACON HOOKS • GROUND BACON
- BACON BONES • BACON PIECES

One Call... We Do It All. Tel: 06 372 7882



*Pirongia*  
**PURE BACON**  
*Traditional classic taste*



www.cabernet.co.nz